



# CASCADE ECHOES

League of Women Voters of Deschutes County



League of Women Voters, a nonpartisan political organization encourages informed and active participation of citizens in government and influences public policy through education and advocacy



### WEB SITES

Local

[www.lwvdeschutes.org/index.htm](http://www.lwvdeschutes.org/index.htm)

State

[www.lwvor.org](http://www.lwvor.org)

National

[www.lwc.org](http://www.lwc.org)

Nationwide Election Information  
[www.VOTE411.org](http://www.VOTE411.org)

Calendar.....	pg.1
Board Roster.....	pg.1
Co-presidents' message.....	pg.2
Frank Pennock Celebration of life.....	pg.2
1 <sup>st</sup> Thurs. Luncheon panel.....	pg.3
LWVDC Birthday Party.....	pg.3
2011 Governance Issues.....	pg.4
LWVPR Social Policy Impacts.....	pg.5
LWVOR Resource Battle.....	pg.6
LWVOR Raffle.....	pg.7
1 <sup>st</sup> Thurs.Luncheon.....	pg.8

## CALENDAR FOR FEBRUARY AND MARCH 2011

### FEBRUARY

**3 FIRST THURSDAY LUNCHEON**, John Rexford, Deputy Superintendent, Vicki VanBuren, Chief Academic Officer, Bob Jones, Director, Julianne Repman, Communication Director and Ron Wilkinson, Supt of District will speak on the *State of the Bend-Lapine Schools*. 11:30 a.m. to 1 p.m. at *King Buffet.*, See back page

**10 Board Meeting 10AM** at the County Building, Lyons Room. All members welcome.

**20 LOVE THE LEAGUE. Birthday Party for LWV.** Feb. 20, 2:00p-4:00p., Sara & Jim Langton's home. Any questions call 541-318-6331. Details inside

### MARCH

**3 FIRST THURSDAY LUNCHEON**, Dan Despotopulos, the director of the Deschutes County Fair & Expo Center 11:30 a.m. to 1 p.m. at King Buffet..

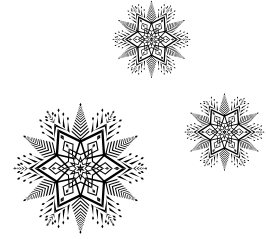
**10 Board Meeting 10AM** at the County Building, Lyons Room. All members welcome.

### THE BOARD OF DIRECTORS F THE LEAGUE OF WOMEN VOTERS OF DESCHUTES COUNTY

Co- Presidents.....	Anita Elliot, Dalyte Hartsough.....	318-6331,322-0469
Vice President.....	Nancy Ruel.....	593-7493
Treasurer.....	Pat Gibson.....	385-9227
Secretary.....	Sara Langton .....	382-5158
ECHOES publisher.....	Denise Mahoney.....	389-9846
Membership.....	Dolores Ellis.....	617-5901
Program (state, nat'l, local).....	Marie Gibson.....	385-9227
Voters Service.....	Susie Penhollow.....	382-2724
Public Relations.....	AndreaBlum.....	389-6990
Special Events.....	Kim Smith,382-2660 & Eve McFarland,	389-5682



# Presidents' Message



Dear League Members,

These winter months seem rather dreary now. Here in Bend we are not used to cloudy skies. Aside from reading gardening catalogues, or going on a trip to some warmer climate, we need to find some interesting things to do. What could be more interesting than getting together with League people and learning something new.

This month is your chance to learn more about our local school system, with a speaker from the Bend-La Pine Schools for our First Thursday Luncheon. Invite your friends, especially educators, to hear what is happening and what is planned for the future. Since we will be having a national, and possibly a state study, on Education, this will give us some preliminary information.

On Sunday, Feb. 20, we plan to have a celebration of the 91<sup>st</sup> anniversary of the League with a party at Sara & Jim Langton's home, from 2 pm to 4 pm. Mark your calendars now so you won't miss it. We will have several long-time members coming to share with us their memories of early days of the League, here and in other parts of the country.

See you at these fine events. And we hope they can impart some wisdom on where we should go from here. There will be time for all to chat about their experiences in League. And, of course, we will also have some good food to share. Please come.

Anita Elliott and Dalyte Hartsough



## FRANK PENNOCK'S CELEBRATION OF LIFE

Plans are now finalized. Frank Pennock's 'Celebration of Life' will be held on Sunday, February 13, from 2 - 4 PM, at the Romaine Village Club House, 19940 Mahogany Street. Turn left off of Brookwood Blvd onto Lodgepole, then left again when you reach Mahogany St. Parking will be difficult, so please double up if you are able to.

I would very much appreciate any donations of food (oer-doeurve type or dessert). Please contact Linda Gardner 541-384-0356 or Kathi Dew 541-678-5712, Coordinators.

And if anyone wishes to make comments, please contact Jacqui Pennock 541-382-6757 so she can make time for you. Thank you.

## FIRST THURSDAY LUNCHEON

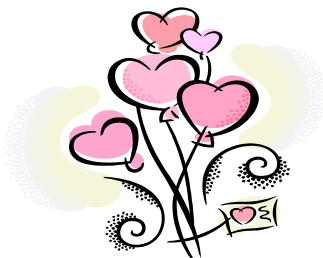
### "State of The Local Bend-Lapine Schools"

John Rexford, Deputy Superintendent, Vicki VanBuren, Chief Academic Officer, Bob Jones, Director, Julianne Repman, Communication Director and Ron Wilkinson, Superintendent of the Bend-Lapine School District will speak as a panel.

Topics to be discussed will include enrollment numbers and class sizes, the budget and projected future, the curriculum with additions and or omissions, such as Personal Finance, Sciences, Math, Foreign Languages, Parenting, etc. Also find out about "No Child Left Behind" versus "Students First". Hear about the school calendar, prep periods, and school days, military recruiters on campus. The Redmond Charter School Model may be a topic with details of Personalized Learning, Inc. and Proficiency Learning.

## LOVE THE LEAGUE PARTY

Celebrating the 91<sup>st</sup> Birthday of the League of Women Voters



SUNDAY, FEBRUARY 20, 2011

2 p.m. to 4 p.m.

At the home of Sara and Jim Langton, 61327 Rock Bluff Lane

Honorees bring yourselves. This is our treat.

League members please bring appetizers and desserts to share

*Please contact Sara Langton at 541-382-5158 to let her know you will attend*

**Directions:** Coming **from the north on Bond**, go half way around the circle at Reed Market (Bond becomes Brookwood) and go south on Bookwood. After crossing the canal, turn right onto Rock Bluff Lane. Continue on Rock Bluff Lane through the 4 way stop. We are on the right at the end of the street, just before the mailboxes.

Coming **from the north on the expressway**, take Powers Road West (a right hand turn at the stop light). Go across Brookwood. Turn left at the 4 way stop onto Rock Bluff Lane. We are on the right at the end of the street, just before the mailboxes.

Coming **from the south on the expressway**, take Powers Road West exit. (You will go beyond the stoplight, exit to the right and curve around to Powers Road, then turn right on Powers Road). Go across the expressway, then across Brookwood. Turn left at the 4 way stop onto Rock Bluff Lane. We are on the right at the end of the street, just before the mailboxes.

Coming **from the south on Brookwood**, turn left onto Cliffrose, then right onto Rock Bluff. We're the first house on the left. Or continue past Cliffrose and turn left on Powers Road and follow above directions.

I'll have our flag out.

## **GOVERNANCE ISSUES, 2011 LEGISLATIVE SESSION**

### **Kappy Eaton**

Fiscal Policy. Business will not be as usual this session. The outgoing Governor and the new Governor agreed on putting forth a new budget draft following the start of the Assembly on January 10, 2011, rather than on December 1, 2010. Governor Kitzhaber has issued a "House Building" document outlining his budget priorities and calling for a rebuilding of Oregon's governance structure. It starts with the caveat that only the projected revenue will be used to form the budget foundation, spending will be based on that revenue, and there will be stated goals/outcomes. With the projected revenue for 2011-13 down \$3.5 billion from the current services level (cut by 9% in July 2010), and little federal assistance predicted, savings everywhere will be required. The House and Senate Revenue committees have drafted bills in the following areas:

- Kicker law reform/reserves
- Measure 50 (1997) reform in property taxes
- Tax expenditures (sun setting tax credits review by policy committees and recommendations for ending, continuing, or revising) to come back to Revenue for final action.

Election/Initiative Reform by House and Senate Rules committees:

- Campaign Finance Fund for ORESTAR continuation
- Prohibits providing prepaid postage for petition sheets
- Requires chief petitioner to disclose system of incentives to paid petition passers
- Citizen Initiative Review with Foundation funded Commission

Redistricting. Technology in place; analyst hired; Census data due April 1<sup>st</sup>.

Ethics Reform by Senate Rules:

- Requires investment and assistant investment officers in State Treasurer's office to file statements of economic interest

Ways and Means committee will be constrained both in adhering to revenue limits and protecting special areas of education, human services and public safety. Agencies will have limited means to change programs and very few, if any, new services can be added.

Government Efficiency Task Force Bill recommendations:

- Consolidation of motor pools across state
- Mitigating police staff over time for court hearings
- Shared housing, between counties, of special populations in county jails (ie. women)
- Public records exemption changes for constituent criteria and processes
- Elimination of county-conducted election of precinct people
- Refinement of SB 77 procedure regarding county inability to meet minimally adequate public safety

## **SOCIAL POLICY AGENCY BUDGET IMPACTS**

### **2011 LEGISLATIVE SESSION**

**Karen Nibler**

#### **Department of Human Services**

Unemployment continues above 10%  
SNAP – food credit card recipients increased from 300,000 in July 2001 up to 400,000 in July 03 (first recession) to 700,000 in July 2010 and growing  
OHP – people covered under Medicaid increased from 400,000 in July 2001 to 550,000 in July 2010 - Oregon Healthy Kids enrolled up to 80,000 plus  
Employment related Day care cut to only those leaving TANF cash assistance  
Child Welfare caseload often result of substance abuse and poverty impacts  
SPD – decreased hours of in home care, OPI program reductions  
DD children – loss of family support and case management services  
MH cuts in community health and substance abuse treatment programs

#### **Oregon Health Authority** will have separate budget in 2011-13

Tobacco Tax Revenues \$4.5 million coming in to increase OHP coverage  
Federal Health Care Reform grants of \$21. million over 4 years  
Projected budget for 2011-13 is \$1.2 billion to continue current programs  
Oregon State Hospital and all mental health programs included  
Public health prevention and management included  
Substance abuse prevention and treatment included  
Private/public partnerships in subsidy and insurance pool programs

#### **Department of Corrections**

Junction City Facility building plans on hold (OSH on same campus)  
Madras facility has closed and unstaffed units – capacity available  
E-board added back \$20 million in operating costs in December  
Community Corrections was increased to handle more offenders locally  
M 57 implementation was suspended / future of M 57 and M 73  
Decrease in prison population by earned time and adjustments to mandatory sentences are being considered rather than early parole releases

#### **Oregon Youth Authority**

Youth Correction Facility capacity was reduced in 2003 from 1200 to 900 so more youth offenders are supervised locally  
E board added back \$3 million to cover staff in the correctional facilities  
Counties support local Juvenile Departments and Detention facilities

#### **Oregon Commission on Children and Families**

Agency may be eliminated and/or lose grant streams for Runaway and Homeless Youth, Juvenile Crime Prevention and Youth Investment  
Department of Human Services may assume funds to contract with local CCF agencies for prevention services

#### **Oregon Housing and Community Services**

Emergency homeless shelter and housing assistance funds not a priority

## **LWVOR NATURAL RESOURCE BATTLE FRONTS 2011-2013**

Peggy Lynch

### **AGENCY BUDGETS**

Reduce rollbacks to natural resource agency budgets. According to these agencies, for every \$1 from the General Fund invested in these budgets, \$376 in economic activity is generated.

**When budgets are tight, regulatory and planning items are the first to hit the cutting board. The League has been working with its partners of the Oregon Conservation Network to create a Common Statement. Of concern is that these budgets are suffering an unequal percentage of General Fund cuts. Agencies then seek additional fees to provide services needed to protect our clean air, land and water for a healthy economy. But fees can only be charged for specific purposes, leaving the public purpose of the agency without adequate funding. For instance, Natural Resource agencies provide critical members to the state's Economic Revitalization Teams around the state. Our focus is not protecting the agencies, but the mission of the agencies that must be funded.**

### **LAND USE**

Protect our statewide land use planning system.

**There will be bills that attack critical citizen involvement provisions, including "standing" (who can appeal a land use decision), increasing appeals fees and penalizing those who lose an appeal.**

### **WATER**

Continue our work on integration of water quantity and water quality and integrating land use and water decision making.

**Support continuation of the Integrated Water Resources Strategy. We may also want to support a Water Rights Fee to help pay for administration and enforcement of water rights. We also support rulemaking by the agencies and would oppose efforts to restrict legitimate rulemaking.**

### **CLIMATE CHANGE**

Support legislation that continues Oregon's leadership in the areas of energy and transportation that address the threat of climate change to our planet.

**We will work with partners on energy conservation, support for alternate transportation and setting targets for the state's six metropolitan areas. We will support actions suggested by a recent state Adaptation Report, starting with those items that have the most cost/benefit in this budget climate.**

MEASURE 76: Parks and the Oregon Plan for Salmon and Watersheds

Assure that implementation of the recently passed M76 (69% voter approval) meets the promise to Oregon voters.

**YOUR HELP IS NEEDED!** If any of these areas interest you, please contact Natural Resources Coordinator Peggy Lynch at [ZULUDAR@aol.com](mailto:ZULUDAR@aol.com) or 541-745-1025

# **Announcing the LWVOR Raffle 2011**

## **Win \$3000 For the Vacation Of Your Choice!**

The LWVOR Raffle 2011 winner will arrange a dream vacation with a certificate of \$3000 to be applied to travel anywhere in the world through travel agent, Doug Walker, Walker Travel, [www.walkertravel.com](http://www.walkertravel.com).

Soon Raffle 2011 tickets will be available through your local League's Raffle Representative. Please buy tickets to introduce the League to non-League members, as a fundraiser for your local League, as gifts and towards an excellent vacation for two. The only restrictions are LWVOR board members and staff are not eligible to win, however their relatives are! Each raffle ticket costs \$10.00 and only 2,000 tickets are printed for this statewide raffle. The drawing will be held at the annual convention on May 14, 2011, Saturday night at 8 PM. The winner does not have to be present. The Raffle will raise about \$15,000 after expenses for the prize, fees, postage, and printing, and has turned out to be an important revenue component to our budget. It raises funds to support Action activities and keeps convention costs and other expenses, such as PMP, down. It identifies non-members who are willing to support our programs.

Not only does this benefit LWVOR, but it also raises funds for local Leagues. If we sell the exact number of tickets as our total number of members, our League will receive \$1 back for each ticket sold. Tickets sold over the membership number will earn us a \$2 benefit per ticket sold. For example, if our total membership is 100 and we sell 120 tickets, our earnings will total \$140. That is, \$100 for the first 100 tickets sold plus 20 times \$2 = \$40, therefore the \$140 total. Raffle tickets will be available for sale in February. Please help LWVOR and our League by buying some for yourself and selling some to friends and family.

For more information contact Lorie James (503-638-3207) or Robin Wisdom (541-672-6982), Raffle Co-chairs.

LWV  
124 NW Utica  
Bend Or 97701

LEAGUE OF WOMEN VOTERS OF DESCHUTES COUNTY

**FIRST THURSDAY LUNCHEON**

**FEBRUARY 3, 2011**

John Rexford, Deputy Superintendent, Vicki VanBuren, Chief Academic Officer, Bob Jones, Director, Julianne Repman, Communication Director and Ron Wilkinson, Supt of District

**"State of The Local Bend-Lapine  
Schools"**

**11:30 a.m. to 1 p.m.**

at ***King Buffet*** (formerly J.J.North's)  
2050 N.E. Third St., Bend (behind McDonald's)